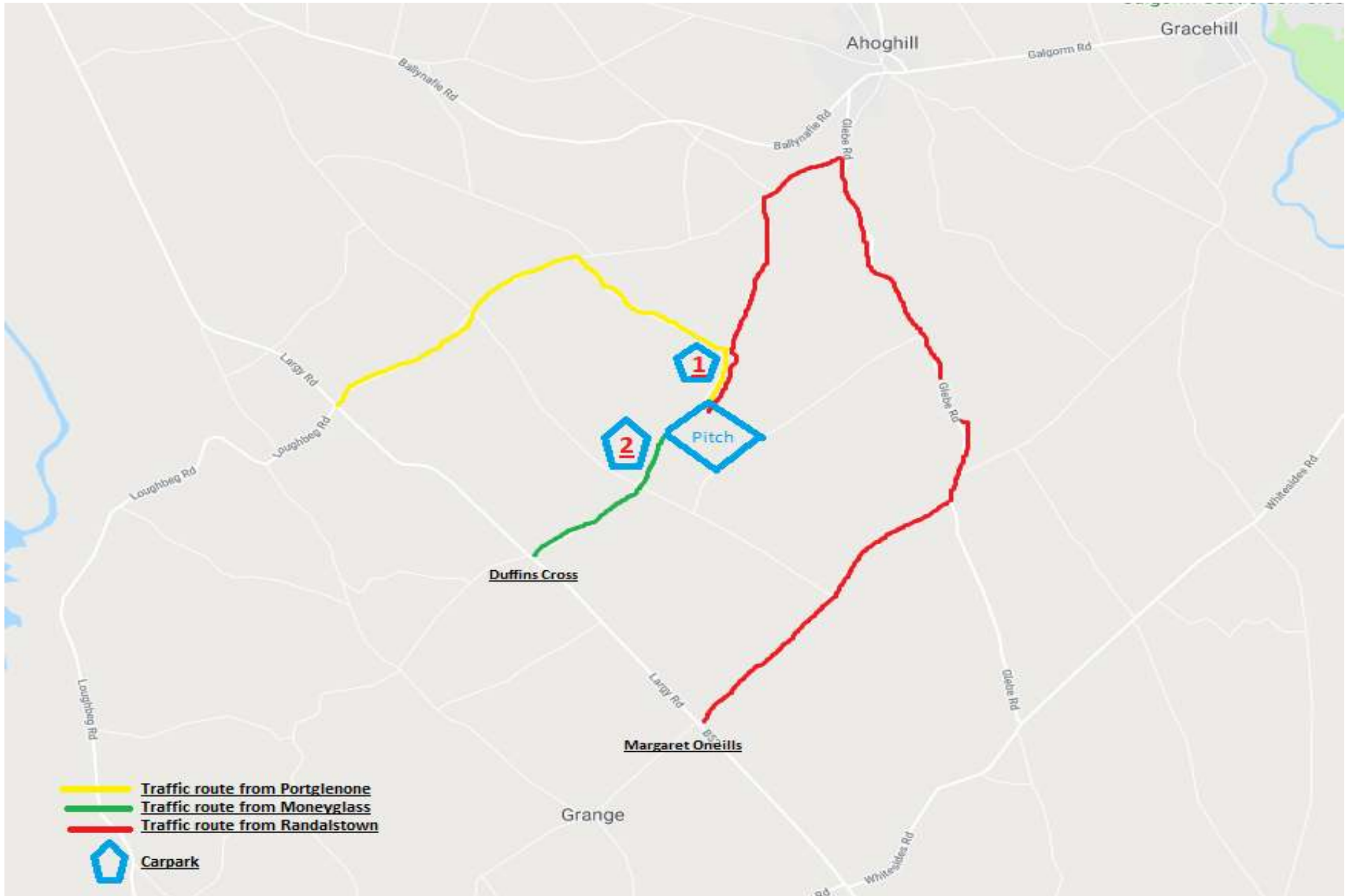


Antrim SFC/MFC Finals, St Mary's Ahoghill Sunday 21st October 2018

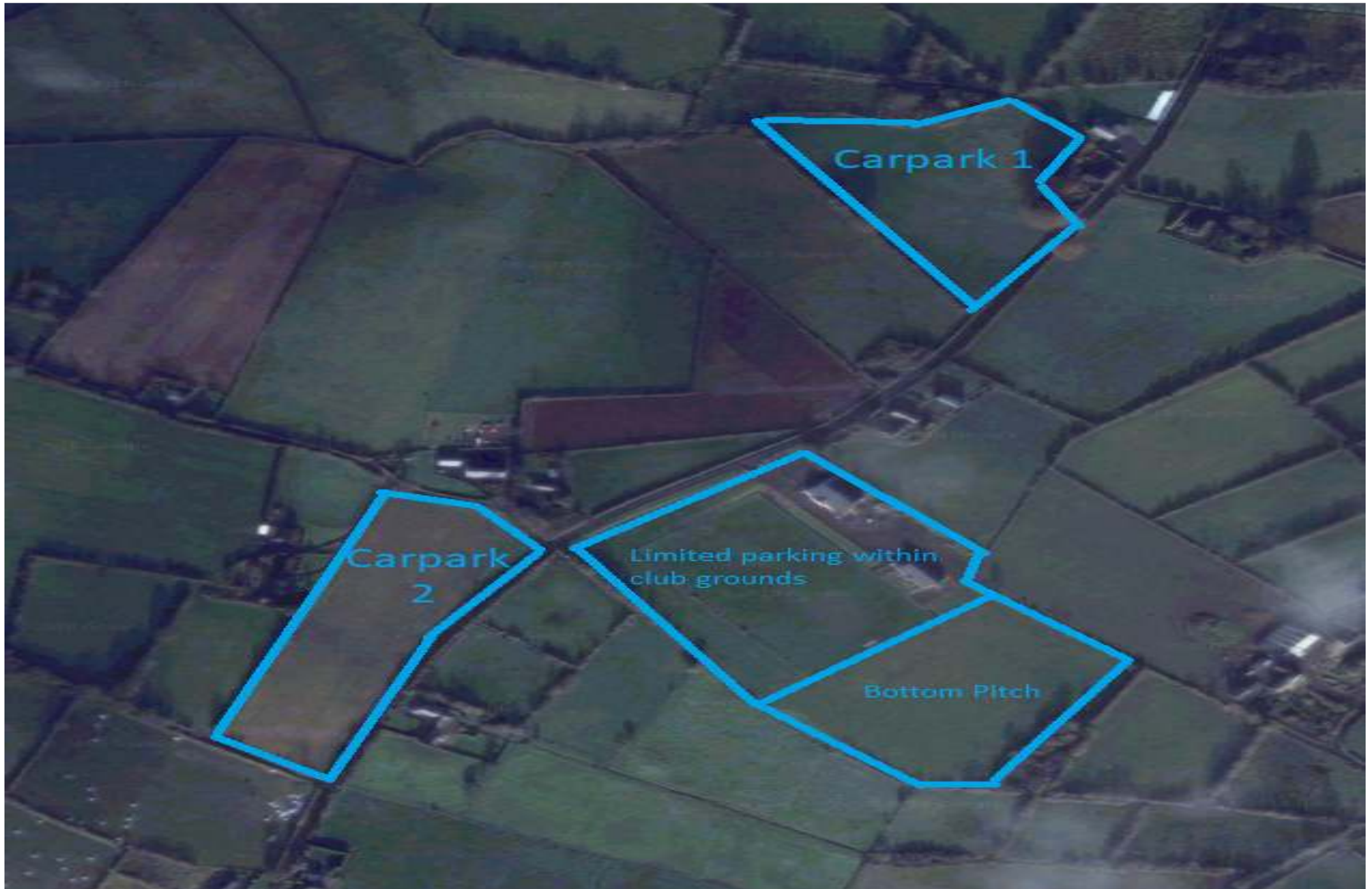
Please see information below for anyone attending the final this Sunday, in order to give everyone as pleasant an experience as possible we would ask that you take a few minutes to read through the notes and to have a look at the maps to familiarise yourself of the layout both at the pitch and car parks.

- Game will be played on the bottom(new) pitch. Everyone entering the bottom pitch will require a ticket, these will be on sale during the week and there will also be 2 ticket stations located close to the entrances on Sunday.
- No cars will be permitted to leave the club grounds for 15 minutes after the senior final. **Please note this will include anyone there for minor final.**
- Patrons are asked to use the available carparking facilities both within the club grounds and the designated areas marked on the map below. **Please do not park on the road.**
- Any special requests regarding Parking/admittance need to be done formally through your club secretary this week, it will not be possible to gain entry to anywhere other than the designated parking areas on Sunday without a pass.
- As we are expecting a large crowd, please leave yourself plenty of time to get parked, walk to entrance, buy ticket (if required) and gain entry into bottom pitch.
- There will be 3 traffic routes in operation in order to get everyone parked as quickly as possible, please take a look at the map and see which one suits you best. Traffic routes will be sign posted and stewards will be positioned along the routes to answer any queries.

Traffic



Parking



Club Grounds

